

More than Just Components



New in programm.

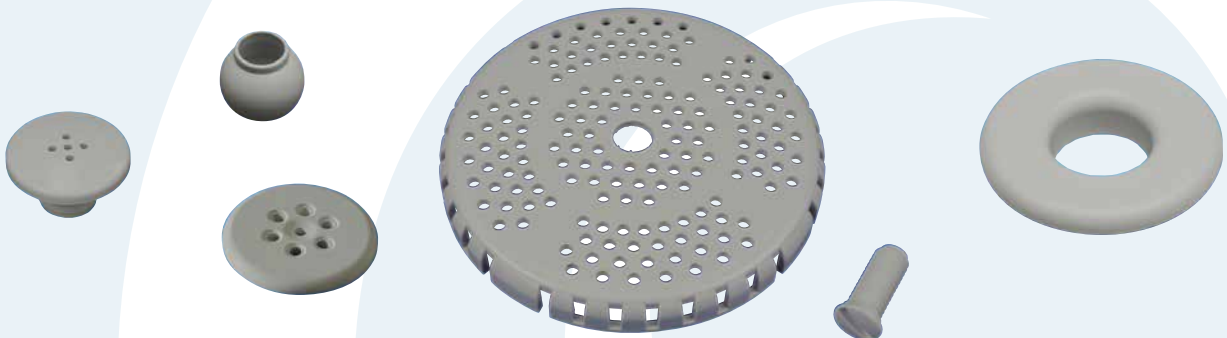
Stainless steel parts V4A.

Here is an excerpt from our program

Special production on customer request possible!



Plastic parts PVC light grey



Control panel and operating unit

Poolmaster

- Graphic display with a graphic menu navigation
- Customer specific versions (logo design, symbols, ...)
- Remotely controllable (via remote control)
- Configurable (various functions can be adjusted by the user)
- Acoustic feedback through signal buzzer
- Standby modus (automatically without water)
- Connection to the control panel via bus cable with plug
- Flat installation in the tub edge (installation height 3 mm)



Poolmaster 3511A-SXX

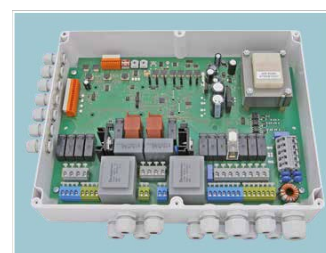
Functions	touch function with graphic display home button 2 user levels info-menu configuration menu real time clock room temperature / bath water temperature IR-receiver
Symbol	arrangement on customer request possible!



Electronic control panel type 400 9028A

The programming of the application function is made customer specific (in cooperation with the customer)

functions	12 relay outputs (11 x 8A 1 x 16A) 2 phase control (speed regulation blower and pump) 1 dimmer for halogen light 4 DC outputs for magnetic valves servos 1 Power LED Spot or 2 chains of effect lights
additional function	real time clock with buffer
connection possibility for	4 dry-running protection sensors 2 temperature sensors 2 push buttons with 7 functions each 2 bus sockets (for operating device, additional control panel) 1 expansion board



SPA Pumps

PRODUCT BENEFITS

- suitable for large whirlpools & spa systems
- high throughput capacity (from 50 m³/h to 72 m³/h)
- 2 inch connection (50 mm or 63 mm)
- central suction und sideoutlet
- pumphead in 3 positions mountable
- high efficiency
- 3 connections for optimal drain of remaining water
- available as single speed and double speed pump
- Integrated in the SPA pumps, the patented SUPA STEALTH-Technology® (SST)

Double-speed version:

- 2 applications in one product
- as therapy and filterpump usable
- high speed for therapy purposes and the low speed for usage as a filter pump
- low operating costs
- save up to Eur 100,- per year in comparison to conventional pumps



Filter pumps

PRODUCT BENEFITS

- easy installation
- robust and durable in its design
- optionally with self-drain and cartridge- drain
- integrated C-profile saves mounting time and money
- suitable for Quick Fix Vario

The patented SUPA STEALTH – Technology® (SST) guarantees the perfect adaptation of the hydraulic design and increases the energy performance.



double union without gluing
optimum adaption for all room layouts.



Energy efficient, compact
and a wide spectrum of
filter performance

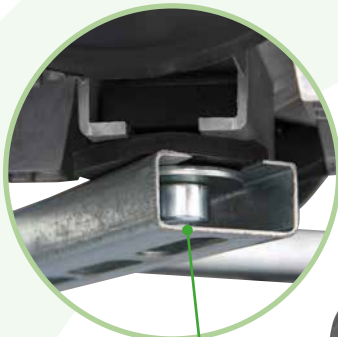


„Quick Fix Vario“
FAST assembly (QUICK)
SECURE fastening (FIX)
VARIABLE adjustment (VARIO)

Pump technology

C-PROFILE

integrated C-profile in the pump foot

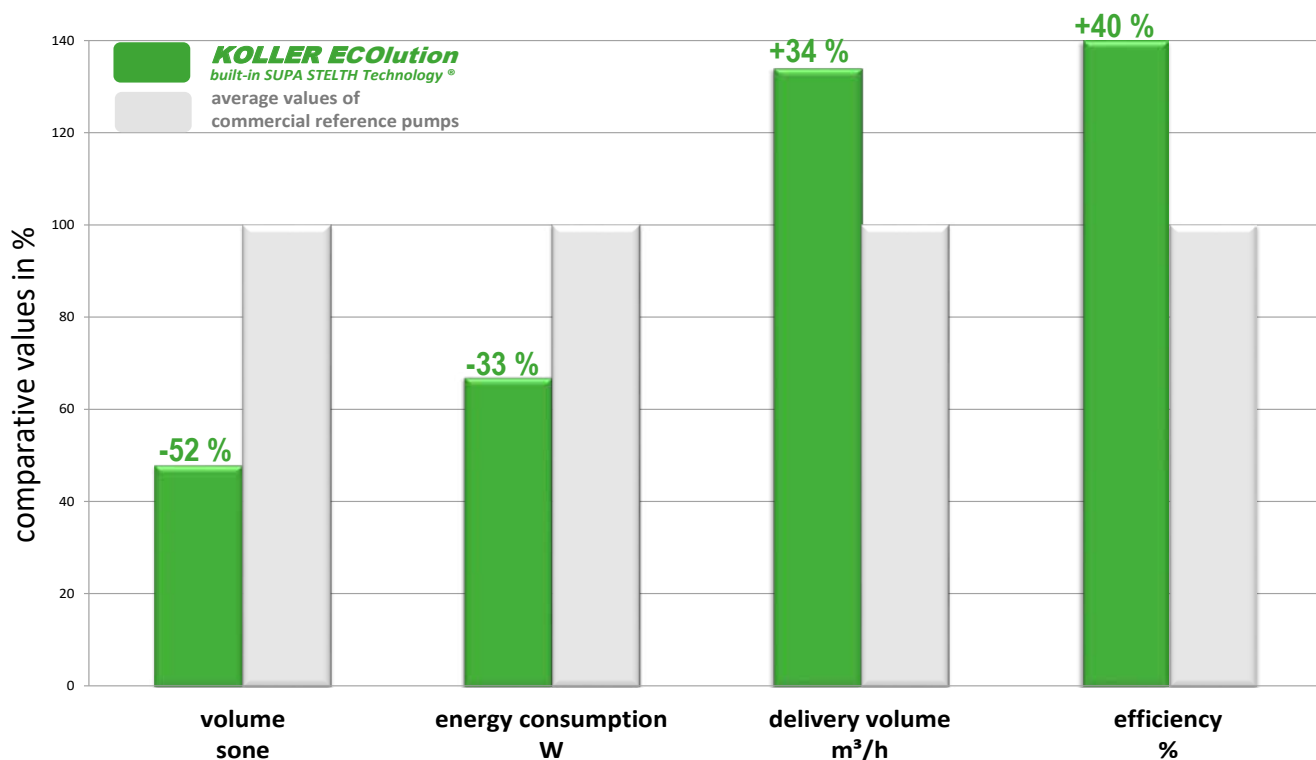


quick and easy installation

quick and easy installation – with the integrated C-profile and the “Quick Fix Vario”-mounting system. Alternatively also mountable with standard legs from our assortment.

„Quick Fix Vario“

FAST assembly (QUICK)
SECURE attachment (FIX)
VARIABLE adjustment (VARIO)



ECOlution

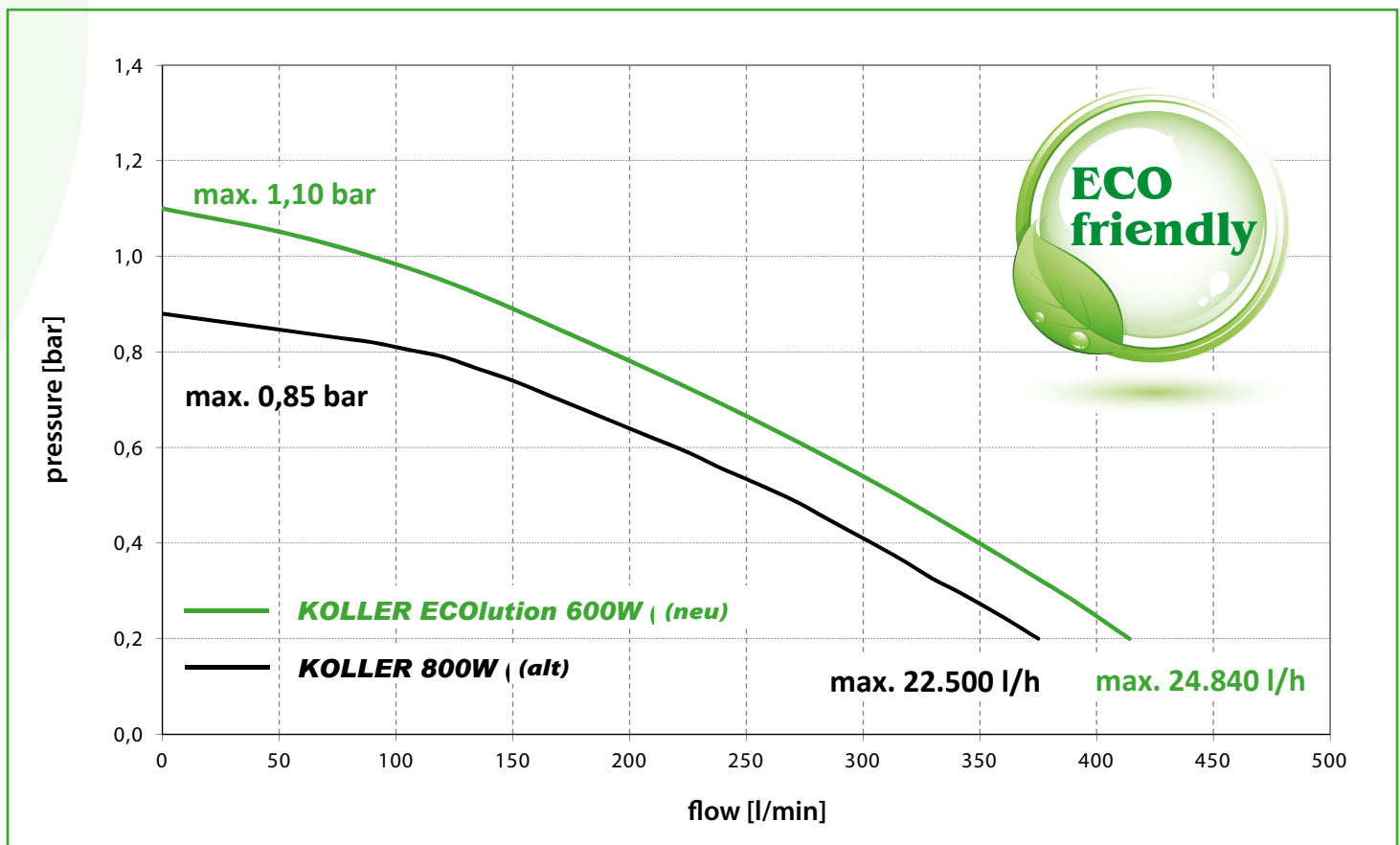
PRODUCT BENEFITS

- Silent version - particularly low-noise levels
- Higher pump performance with less energy consumption
- Improved efficiency of the pump, through the patented SUPA STELTH-Technology® (SST)
- Significant energy savings compared to reference pumps
- Compact - space-saving installation
- Integrated C-profile saves mounting time and money
- Compatible with universal tool carrier
- Easy conversion of existing systems by same connection thread
- Variety of connection options such as straight union, angle 23 °, 45 °, 67 °, 90 °, T-pieces, etc.
- 3 different pump head designs
- Robust durable design
- Compatibility with previous KOLLER-jet pumps of the power class 650W and 800W - thus arbitrarily interchangeable



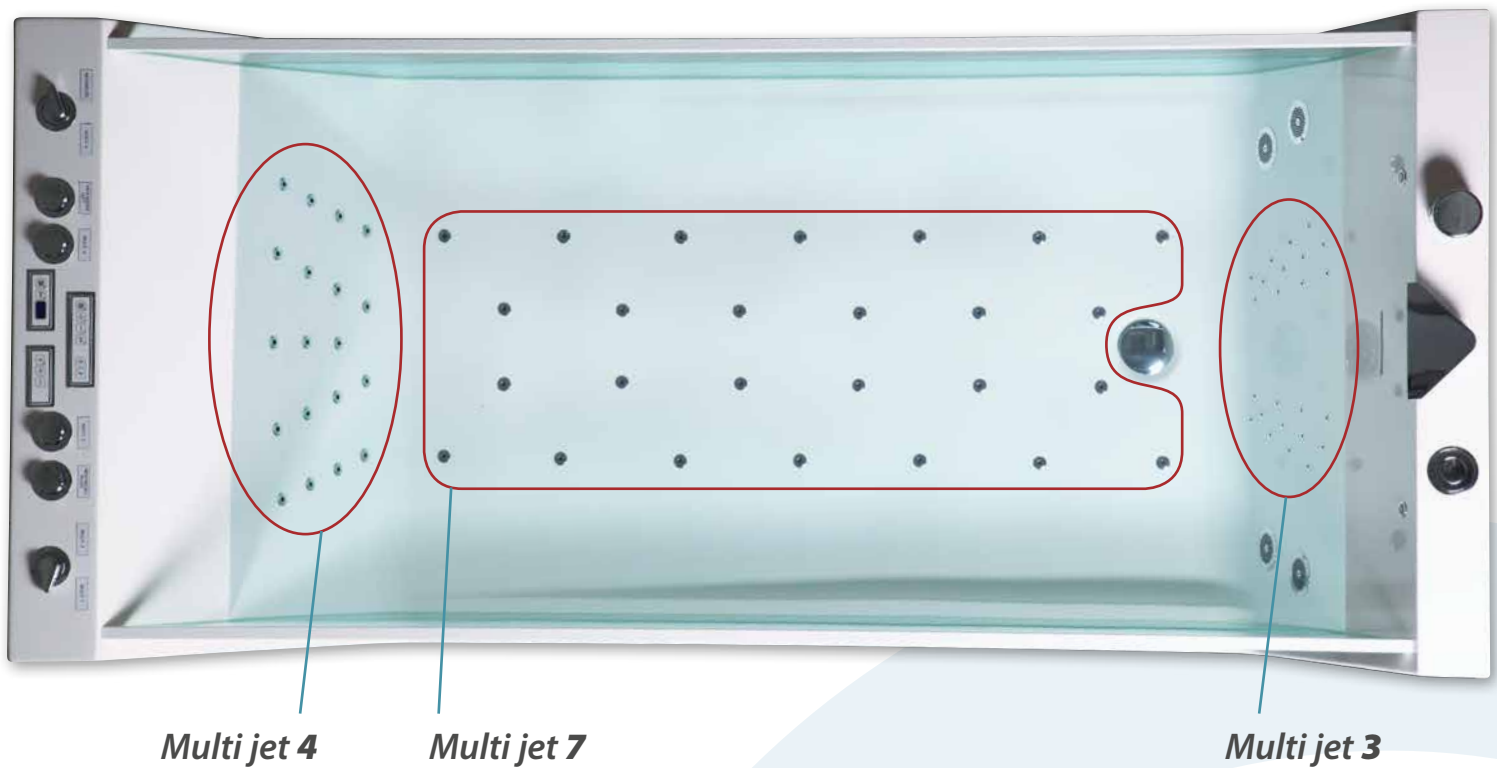
PERFORMANCE COMPARISON

Higher delivery volume at the same time less energy consumption and super silent operation



Multi Jet Jets

JETS WITH 3 TO 7 FUNCTIONS



A complete overview of the Multi jet program
can be found in our main catalogue, pages 7.1 to 7.3



Multi Jet 7 Jets

WITH CARTRIDGE



C-M00192



P-0148-0408



P-T-1148-0408

P-15191

The Multi Jet 7 is supplied with the following units:

- Water from a jet pump
- Whisper air from a whisper blower
- Air from an air blower via a turbo air regulator

The Multi Jet 7 is also available as a transparent version: This can also be illuminated using a lens housing (P-15191) and a suitable effect light chain (5191A series).

The 7 different possible features are as follows:

- 1 - Water jet
- 2 - Air jet
- 3 - Whisper air jet
- 4 - Jet with whisper air
- 5 - Jet with air control
- 6 - Jet with turbo air
- 7 - all functions combined

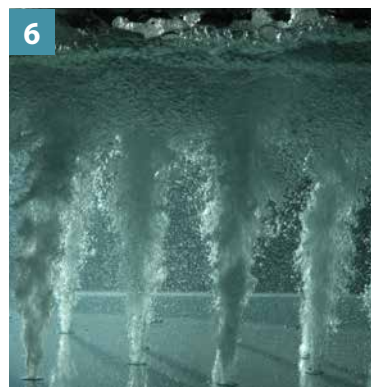
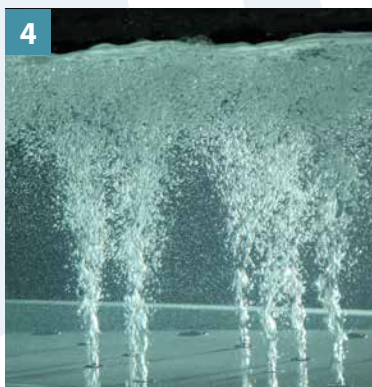
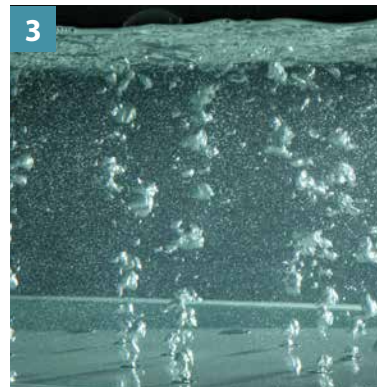
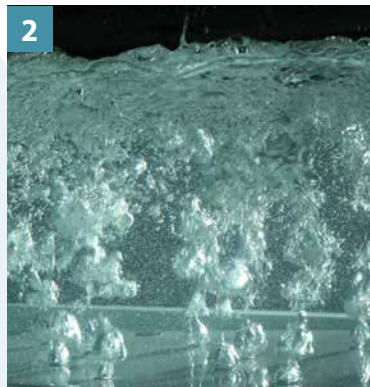


ø 4 mm
P-71104/A



ø 8 mm
P-71108/A

Check valves
Fitting in fitting



Quick Fix Vario

The fixation system "Quick Fix Vario" developed and patented by KOLLER has considerably simplified the attachment of Whirlpool pumps - because it simultaneously ensures

PRODUCT BENEFITS

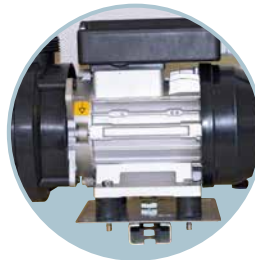
- **RAPID assembly** (QUICK)
- stable and **SECURE attachment** (FIX) and
- **VARIABLE adaptation** of the system (VARIO) based on individual (space) requirements
- **cost saving** through less assembling auxiliaries
- **directly attaching** of the pump to the C-profile of the tub frame
- easy mounting **without any tools**
- available in **5 different heights** from 100 to 140 mm
- **sound-damping effect** - as there is no mechanical contact of metal parts
- fulfills an important buffer function of **vibration damping** with the engine running



Quick and easy assembly with the integrated C-profile in the pump base and the „Quick Fix Vario“ fastening system, the pump can be attached directly to the C-profile of the tub frame. Alternatively, it can also be mounted with standard feet from our range.

WITHOUT C-PROFILE AND QUICK FIX VARIO

Here you can see the well-known assembly of a pump with feet on a carrier plate. As mentioned, you need **at least 15 parts** to connect the pump to the tub frame. By using the Quick Fix Vario, this effort is significantly reduced and you save material and working time.



For the jet pump without C-Profile you need 15 pieces!

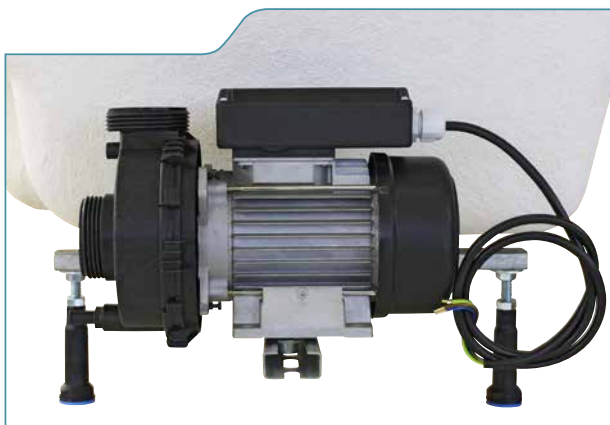


C-Profile

C-PROFILE

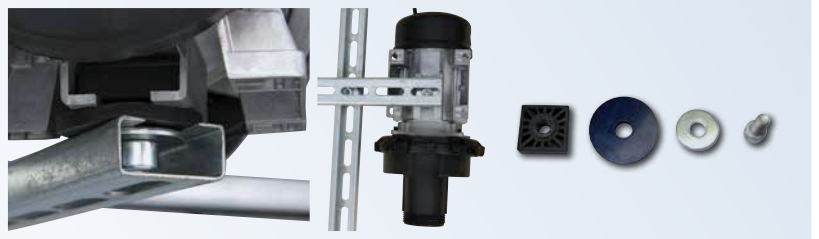
DIRECT MOUNT

Quick and easy assembly with the integrated C-profile. Pumps with a drain nipple can be mounted directly on the C-profile of the base frame using this fastening system. Alternatively, it can also be mounted with the standard feet from our range.



MATERIAL AND COST SAVINGS

WITH C-PROFILE



For the jet pump with C-Profile you need 4 pieces!

Double union

PRODUCT BENEFITS

- **Cost savings in purchasing**, because instead of 3 parts (2 x union, 1 x pipe / hose) only one part needs to be purchased now, which in comparison is much cheaper
- **Cost savings in mounting**, as due to the omission of the gluing process including drying time a significant time savings is possible!
- **Consciously service friendly**: Due to their easy separability, related components can be exchanged easily and quickly in case of service.
- **Space-saving** - short, compact connection, because each mm space is important.



Double union without gluing!

Double unions are – for individual adaptation to any spatial requirements - available:



straight connection



corner connection with 90°



or corner connection with 45°

Example of use

Space-saving connection possibility of a heating with the pump



without double union



with double union

Standing blowers with sound absorber

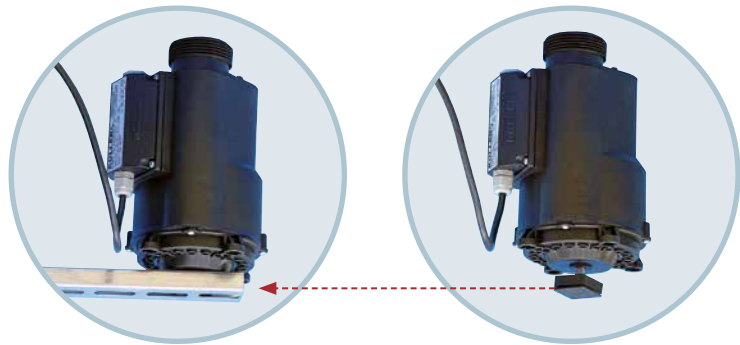
**ONLY 57 decibel
SUPER-SILENT !!**

PRODUCT BENEFITS

- Small space requirement due to compact vertical design
- Straight threaded connection up to the pipeline
- Temperature stabilized screw connection (accessories)
- Available with or without pneumatic control
- Available with or without air preheating
- Large operating range of 220-240V 50/60Hz
- Radio screened
- Certified

Quick and easy assembly

Since we have the standing blowers with the central fastening version, you can quickly and easily mount them directly on the C-profile of the tub frame without using feet.



Standing blower with angled 90° sound absorber



Standing blower with straight sound absorber



Blower in various designs possible electronic, pneumatic, with central attachment,...

Lying blower



PRODUCT BENEFITS

- Installation under the bath slope thanks to the compact horizontal design
- Threaded connection to the pipeline
- Temperature stabilized T-piece fitting (accessories)
- Available with or without pneumatic control
- Available with or without air preheating
- Wide range of use: 220-240V, 50/60Hz
- Radio screened
- Certified

IN DEVELOPMENT

Cloud based control

“SPACONNECT” THE APP CONTROL
FOR YOUR WHIRLPOOL



PRODUCT BENEFITS

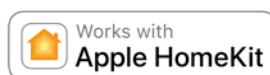
- Works with your favorite voice assistant
- Remote control from anywhere
- User-friendliness through an intuitive interface
- Personalization through specific settings
- Effective maintenance and error diagnosis through real-time data monitoring

Here are some technological aspects of IoT using cloud systems provided by AWS, Apple, and Google that provide customer benefits:

- Efficiency and cost savings: IoT devices and cloud systems can optimize resource usage, reduce downtime, and increase efficiency, resulting in cost savings for customers.
- Predictive maintenance: AIoT devices and cloud systems can use machine learning to predict when maintenance is needed, avoiding costly downtime and improving reliability.

Unique selling proposition for our IoT-based whirlpool and spa pool controller:

- Personalized settings
- Intelligent maintenance
- Integration with other smart home devices
- Automatic energy management



IoT - The Internet of things (IoT) describes physical objects (or groups of such objects) with sensors, processing ability, software and other technologies that connect and exchange data with other devices and systems over the Internet or other communications networks.

AIoT - The Artificial Intelligence of Things (AIoT) is the combination of Artificial intelligence (AI) technologies with the Internet of things (IoT) infrastructure to achieve more efficient IoT operations, improve human-machine interactions and enhance data management and analytics.

Direct Line & Square Line “BLACK EDITION”

We are now also offering our familiar pushbutton switches from the Direct Line and Squareline series in a new „Black Edition“. Talk to us about what we can produce for you.

As always requested by our customers, also with the „Black Edition“ design and logo is possible on customer's request.



Example Direct Line pushbutton switch „Black Edition“



Example Squareline pushbutton switch „Black Edition“

Koller MILK System

PRODUCT BENEFITS

- 100 % pure water with no additives
- Visible parts in different materials: plastic, chrome-plated brass and brushed stainless steel
- Can be perfectly combined with all common whirlpool systems

Faster renewal of skin cells

- Dead skin cells are replaced by newly formed cells, the skin is radiant and you look fresher and more youthful.

Better complexion

- The Koller Milk Therapy reduces the appearance of scars, crow's feet and skin irregularities.

Improvement in general condition

- The serotonin level increases and everyday life is positively influenced.



Example: Use in a SPA tub



Example: Use in a whirlpool



Switch on



10 sec



30 sec



50 sec

In two different versions, available:

With 2 jets and a small pump

For tubs up to approx. 400 liters
Maximum water level 40 cm

With 4 jets and a big pump

for tubs from 400 to approx. 800 liters

When the Koller Milk Therapy is activated, the oxygen content in the water increases many times over after just a short time. Due to this special technique, the water becomes completely white after a short time (hence the name Milk System).

The skin layer is thus supplied with a high degree of moisture, which helps to clean the pores. The microbubbles in the water help the skin to regenerate and dead skin cells are replaced by newly formed cells. There is faster renewal and growth of skin cells. This process is clearly supported by the regular use of the system.



**WORLD-
WIDE
AT YOUR
SERVICE!**

Canada
USA
Russia
Ukraine
Europe
Turkey
Tunisia
Israel
Egypt
United
Arab
Emirates
Bahrain
South Africa
India
Iran
China
Hong Kong
Thailand



Worldwide sales – highest customer satisfaction!

The products of Koller Whirl Systems are sold around the globe and are a well-known and respected name everywhere. **Koller Whirl Systems - Quality pays off!**

You'll find the contact for your country at

whirl.rkoller.com/Contact



New in programm.

Slot nozzles



Nozzle bodies for slot nozzles

Matt black and matt
white brass parts
on request



KOLLER *WHIRL-SYSTEMS*



RUDOLF KOLLER Ges.m.b.H.
A-1210 VIENNA
Brünner Straße 313-315
Tel.: +43/1/604 43 33
office.vienna.at@rkoller.com

A-3902 VITIS
Rudolf-Koller-Straße 1
Tel.: +43/2841/8207
office.vitis.at@rkoller.com

RUDOLF KOLLER spol.s r.o.
CZ-37701 JINDRICHUV HRADEC
Dolní Pena 201
Tel.: +420/384/370 410
office.jhradec.cz@rkoller.com



Technical specifications and printing errors are subject to change without prior notification. © Copyright reserved.